

# Borough of Ephrata Newsletter

*Published by the Borough of Ephrata to Communicate With and To Inform Residents About Ephrata Borough News and Events*

## Ephrata Community Events

Second Annual *Tour de Ephrata*

Downtown  
Sunday, April 30  
Noon to 5:30 PM

Make-A-Wish Foundation®  
Mother's Day Convoy  
Sunday, May 14

TNT Youth Ministries  
The Extreme Event  
Ephrata's Grater Park  
Friday, May 26  
6:00 PM—10:00 PM

Hospital Day in the Park  
Saturday, June 3

Make-A-Wish Foundation®  
"Cruisin' for Wishes"  
June 10 (Rain Date June 11)  
10:00 AM—5:00 PM

## Inside this issue:

<b>Sweep &amp; Weed Program</b>	<b>2</b>
<b>SRO Program</b>	<b>3</b>
<b>Borough Projects</b>	<b>3</b>
<b>Council Committees</b>	<b>4</b>
<b>Refuse &amp; Recycling</b>	<b>4</b>

## ELECTRIC DIVISION ADDS VALUE

Ephrata Borough is one of 36 Pennsylvania boroughs (out of 961 in the Commonwealth) that owns and operates an electric distribution utility for the benefit of its citizens and businesses. The Borough purchases electric power from Reliant Energy Services based in Houston, Texas, and then distributes that power to about 6,600 customers.

Since less than four percent of Pennsylvania boroughs are engaged in operating electric distribution utilities, it can be argued that it is somewhat unusual for municipalities to be in this business. Given that a municipal electric utility is rare in Pennsylvania, it is important to examine the value added to the community by remaining in the electric business.

### Reliability of Electric Service

Because it is difficult to perform the routine tasks of everyday life without electricity, keeping electric power flowing to our customers is the number one priority of the Ephrata Borough Electric Division. The Division has an outstanding reliability record due in large measure to the excellent workmanship of our highly skilled line crew and their dedication to preventive maintenance. The limited geographic size of the Borough allows our crews to respond quickly to any power interruption.

One electric industry measure of reliability is called the "System Average Interruption Frequency Index" (SAIFI). This measure is simply the average number of times during a year that a customer experienced a power outage. For 2005, Ephrata's SAIFI was 0.98, meaning that, on average, each Borough electric customer had less than one sustained power interruption during the year. This is an average number: many Borough customers experienced no power interruption during 2005; some Borough customers may have experienced more than one interruption during the year. According to the American Public Power Association (APPA), Ephrata's SAIFI of 0.98 is far better than the SAIFI of 3.84 sustained interruptions experienced by customers in municipal systems of similar size to Ephrata.

Another industry measure of reliability is called the "System Average Interruption Duration Index" (SAIDI). This index measures the average number of minutes for service interruptions (duration of power outage) for all customers served. Ephrata's SAIDI in 2005 was 16.45 minutes. This stacks up well against the SAIDI of almost 52 minutes reported by APPA for municipal systems of our size.

The Electric Division's performance demonstrates the Borough's commitment to reliable electric service for its customers. This excellent reliability record adds real value for our customers. *Continued on page 2*

## Borough Employees Donate Christmas Gift

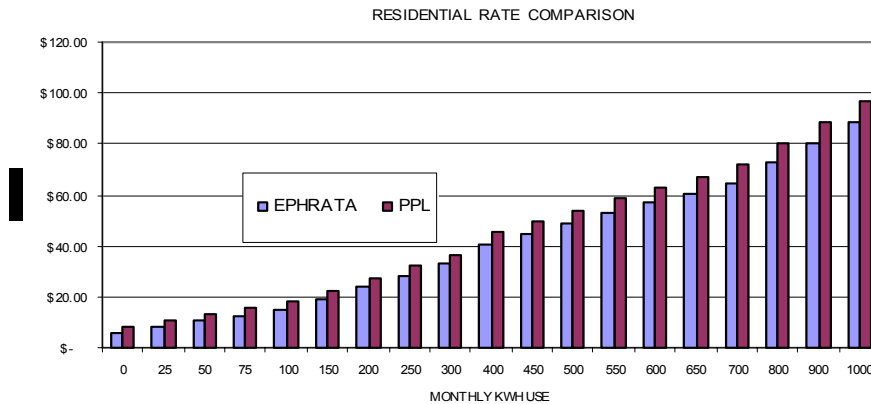
In lieu of receiving a Christmas gift in 2005 Borough of Ephrata employees decided to give rather than receive. Deciding to give back to the community employees contributed \$2,500 to Ephrata Area Social Services. Shown presenting the check to Thomas Swalwell, Executive Director of EASS is Ephrata Police Officer Steve Wene, Darleen Lefever, Customer Service Representative and Tracy Roseberry, Business Office Manager.



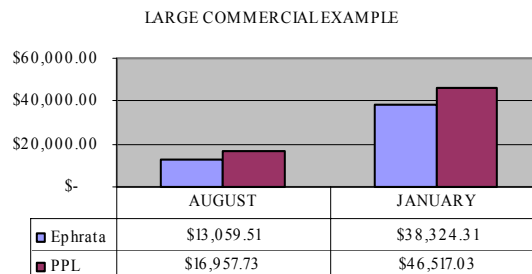
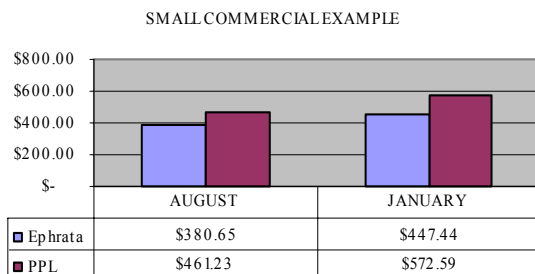
**ELECTRIC DIVISION ADDS VALUE, Cont'd.**

**Electric Rates**

Another important way the Borough adds value for Borough electric customers is by maintaining customer electric rates below the rates of surrounding investor-owned utilities. The following graph clearly shows that Borough residential electric rates are below the residential electric rates of PPL, the investor-owned utility serving outside the Borough.



Borough commercial and industrial electric rates are likewise advantageous for our customers when compared to charges for the same service from the investor-owned utility in our area. On the left is a graph of billing reflective of Borough and PPL rates for a small commercial establishment using 4,360 KWH in August and 5,280 KWH in January. On the right is a graph demonstrating a cost savings for a school building in the Borough that is “total electric”, using only electricity for all heating and cooling needs of the facility. The charges reflect billing for 179,000 KWH in August and 527,000 KWH in January.



In this newsletter we have highlighted two important benefits of electric service provided by the Borough in which our Electric Division adds value for our customers – reliability and low electric rates. In the next edition of the Borough Newsletter, we will examine other value-added services provided to our community through the operation of our municipal electric utility.

**Borough Prepares for Sweep and Weed Program**

After a relatively mild winter the Borough’s Public Works Division is gearing up to begin its street maintenance program. This program includes but is not limited to, sweeping, weeding and spraying and an initial inspection of all Borough streets. Each street is swept twice a year with a more frequent emphasis in the Central Business District and high traffic areas.

The initial visual inspection of the Borough streets prepares the Public Works staff to devise a work plan to accomplish several objectives. The first objective of safety is met through the removal of debris and grit on storm grates as the quality of water improves when these items are stopped from flowing into streams as well as minimizing the need to clean the storm water collection system from deposits washed into the system from the street. Through the removal of debris in the streets the second objective is then achieved by making the streets clean thereby improving the aesthetics of the community. Finally, during the cleaning process the Borough has the opportunity to spray to control weeds with a non-toxic herbicide.

Please watch local newspapers for upcoming news releases or check the Borough of Ephrata website at [www.ephrataboro.org](http://www.ephrataboro.org) for information on the street maintenance program.

## Ephrata School Resource Officer Peter Sheppard Walks New Beat

Ephrata's School Resource Officer (SRO) Pete Sheppard, as shown in picture, stops by with a few new friends from the middle school. Officer Sheppard, a nine-year veteran with the Ephrata Police Department, assumed his new responsibilities in January when he set up his offices at the Ephrata High School and Ephrata Middle School. "Connecting with students and building a positive rapport" is what Officer Sheppard states is his first goal. After his first month on the job many students have introduced themselves or just stopped by his office to talk.

As equally welcoming are the faculty and staff. Many have expressed their positive feedback stating they are glad to have a visible Officer on site, along with the positive excitement that the SRO program will bring to the Ephrata School District. In fact, a few teachers have already approached Officer Sheppard to conduct classroom education on a variety of topics and to serve on an advisory board.



The School Resource Officer program was made possible with a federal COPS grant that calls for utilizing a police officer on youth-related activities 70 percent of the time. However, "the commitment to the Ephrata School District is 100 percent" stated Ephrata Police Chief Steve Annibali.

## Please Check Water Meters Annually

The Borough is asking property owners for their assistance to maintain accurate records on residential and commercial water meters. The Borough reads meters on a monthly basis to record water usage into a property.

These water meters, called remote meters, are typically located on the outside of a property. However, all properties also have a water meter located inside, typically on the lowest level. When these two readings do not correspond this results in inaccurate billings. Therefore, the Borough asks property owners and residents to verify that readings on both meters match. If you find that your outside and inside water meters do not correspond please contact the Borough Business Office at 738-9222.

## Borough Projects Begin to Take Shape

### Main Collector Being Replaced

The Borough began the replacement of 6,600 lineal feet of twenty-inch sanitary sewer main in February. The current sewer line is approximately sixty years old and in poor condition. A new thirty-inch PVC pipe providing additional flow capacity to meet future needs will replace the line.

The project begins at the Moyer Pump Station located directly across from the Ephrata Management Service Inc. (formerly Walter Moyer Co.) follows the Cocalico Creek in a southerly direction and ends at a distribution box located in Old Mill Road. This project includes the construction of an invert siphon across the Cocalico Creek that upon completion of this project the Moyer Pumping Station will be removed from service saving the Borough electric, fuel, maintenance and operation costs. This project is expected to take four to six months to complete.



### Martin Avenue Improvements

This project will construct a new travel lane on Martin Avenue in front of the Cloister Branch of Ephrata National Bank. The new lane will allow the existing lane to be dedicated to left hand turns into the Cloister Shopping Center. The new lane will permit through traffic to keep moving along Martin Avenue or turn into the bank. The project will begin in April and is expected to be completed in June.

### West Chestnut Street Storm Water

Slated for May this project will include installation of 1,200 lineal feet of storm water piping and structures along West Chestnut Street from Terrace Avenue to Spruce Alley (between Park Avenue and Church Avenue) and along Spruce Alley to the underground aqueduct located near Locust Street.

## Borough of Ephrata Newsletter

124 South State Street  
Ephrata, PA 17522  
[www.ephrataboro.org](http://www.ephrataboro.org)

Borough Office Hours  
Monday-Friday 8:00 AM-5:00 PM

Phone: 717-738-9222  
Fax: 717-733-4062  
After Hours: 717-733-1277  
Email: [custserv@ephrataboro.org](mailto:custserv@ephrataboro.org)

**Borough Manager**  
**Gary A. Nace**

**Chief of Police**  
**Steven N. Annibali**

Ephrata Borough Council meets for its Work Session on the first Monday each month at 7:00 PM and for its Regular Meeting on the second Monday each month at 7:30 PM at the Borough Hall, 124 South State Street.

### Ephrata Borough Council

Bryan J. Foard	1st Ward	721-6345
Daryl L. Horning	1st Ward	733-6226
Johann H. Freeseaman, Jr.	2nd Ward	733-4883
Mary E. Schurr, President	2nd Ward	733-6411
Anthony Kilkuskie	3rd Ward	733-7607
Fred M. Thomas	3rd Ward	733-0421
Robert J. Good, Vice President	4th Ward	733-2520
Victor E. Richard	4th Ward	733-8242
<b>Mayor</b>		
Ralph E. Mowen		733-6129

## 2006 Borough of Ephrata Council Committees

*Budget and Finance Committee* - Responsible for overseeing budget preparation, investments, audits and related financial matters. Committee members include: Johann Freeseaman, Chairperson, Bryan Foard and Victor Richard

*Development Activities Committee* - Responsible for overseeing Borough property, subdivision and zoning regulations, and economic development activities. Committee members include: Fred Thomas, Chairperson, Johann Freeseaman and A. Anthony Kilkuskie

*Public Safety Committee* - Responsible for police, fire, public health, codes enforcement, and emergency management. Committee members include: Victor Richard, Chairperson, Robert Good and Johann Freeseaman

*Highway Committee* - Responsible for streets, alleys, curbs, sidewalks and storm water management. Committee members include: Robert Good, Chairperson, Victor Richard and Daryl Horning

*Municipal Enterprise Committee* - Responsible for electric, sewer and sanitation. Committee members include: Bryan Foard, Chairperson, Daryl Horning and Fred Thomas

*Community Services Committee* - Responsible for personnel policies, labor contract review, parks and recreation, and community services and awards. Committee members include: Daryl Horning, Chairperson, Robert Good and A. Anthony Kilkuskie

*Special Projects Committee* - Responsible for long range planning and feasibility studies on major projects. Committee members include: A. Anthony Kilkuskie, Chairperson, Bryan Foard and Fred Thomas

## Refuse & Recycling Collection Notices for Ephrata Borough Customers

Collection of refuse & recycling will be delayed one day during the week of Monday, May 29, 2006 - Memorial Day.

Yard Waste Collection begins April 1, 2006 through October 15, 2006. Collection is same day as recycling.

Tire and White Good collection (large appliances weighing more than fifty pounds) will be the week of May 1, 2006 and the week of September 11, 2006. Collection is the same day as recycling – this is a new collection schedule for 2006.

*Extra service tags required for Yard Waste & Tires - \$2.00/each and White Goods - \$20.00/each*

*Tags can be purchased at the Borough Office, 124 South State Street*

***Borough offices are closed Good Friday, April 14th & Memorial Day, May 29th***